

masterack®

COMMERCIAL VEHICLE EQUIPMENT



Ford Transit Vans

In Stock • Available for Local Installation



STEEL PARTITIONS

Steel partitions present maximum cargo security. Perforation across center and passenger panels limit blind spots. Features non-glare black powder coat finish.

S - Solid P - Perforated H - Hinged L - Left M - Middle R - Right

Low Roof

027084KP* Partition - SL / PM / PR

027088KP* Partition w/ Hinged Center Door - SL / HM / PR

02H369KP Attachment Panels - Low Roof

\$575

Medium & High Roof

02J177KP* Partition - SL / PM / PR

02J180KP* Partition w/ Hinged Center Door - SL / HM / PR

02H370KP Attachment Panels - Medium Roof

02H371KP Attachment Panels - High Roof

\$749

\$799

*ALL partitions must be ordered with an attachment panel

ACCESSORIES

\$99 Each

Window Screens

Deter theft and protect windows with welded wire window screens. Non-glare black powder coat finish. Contoured to fit the Ford Transit.



02G488KP WINDOW SCREEN - LOW ROOF REAR (SET/2)

02G489KP WINDOW SCREEN - LOW ROOF SLIDING DOOR (CS)

02H819KP WINDOW SCREEN - LOW ROOF SIDE BARN DOOR (SET/2)

02G144KP WINDOW SCREEN - MED / HIGH ROOF REAR (SET/2)

02G145KP WINDOW SCREEN - MED / HIGH ROOF SLIDING DOOR (CS)

Rubber Floor Mat

Constructed of heavy duty rubber, Rubber Cargo Mats offer effective protection from scratches, dents and spills. The unique anti-skid, air cushion design looks good and muffles sound. Mats are custom cut for the Ford Transit.

02H376KP TRANSIT 130"WB FLOOR MAT

02H377KP TRANSIT 148"WB FLOOR MAT

02H378KP TRANSIT 148" EXT. FLOOR MAT





SmartSpace is your innovative, modular cargo management system that offers a variety of shelves, drawers, and accessories that slide into upright panels for infinite storage possibilities. Made from structural foam and aluminum materials, this system provides weight savings over comparable steel interiors. These quiet, composite shelves will hold as much weight as steel, with heavy-duty grade-8 fasteners to secure the system to your vehicle. **Partition sold separately.**



Low Roof (130" / 148"WB)



SMARTSPACE STANDARD PACKAGE			
PACKAGE #0SS100KP			
Item#	Part#	Description	Qty.
1	0SS150KP	STREETSIDE : 44H" x 74"W x 16"D	1
2	0SS151KP	CURBSIDE : 44H" x 44"W x 16"D	1

INSTALLATION KIT SOLD SEPARATELY	
0SS125KP	FORD TRANSIT RWB LOW ROOF
0SS126KP	FORD TRANSIT LWB LOW ROOF

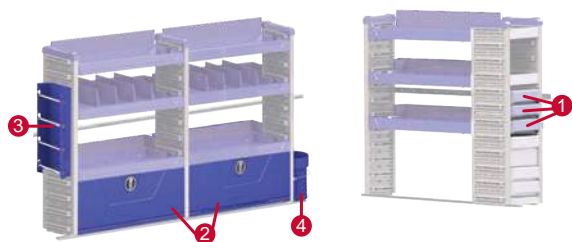
Medium Roof (130" / 148"WB) High Roof (148"WB)



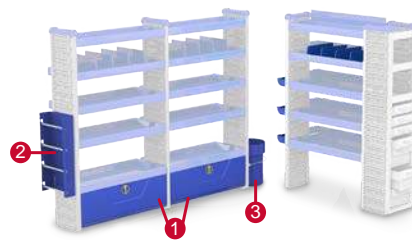
SMARTSPACE TALL PACKAGE			
PACKAGE #0SS101KP			
Item#	Part#	Description	Qty.
1	0SS152KP	STREETSIDE : 66H" x 74"W x 16"D	1
2	0SS153KP	CURBSIDE : 66H" x 49"W x 16"D	1

INSTALLATION KIT SOLD SEPARATELY	
0SS127KP	FORD TRANSIT RWB MEDIUM ROOF
0SS128KP	FORD TRANSIT LWB MEDIUM ROOF
0SS129KP	FORD TRANSIT LWB HIGH ROOF
0SS130KP	FORD TRANSIT 148"WB EXT. HIGH ROOF

+ TRADE OPTIONS



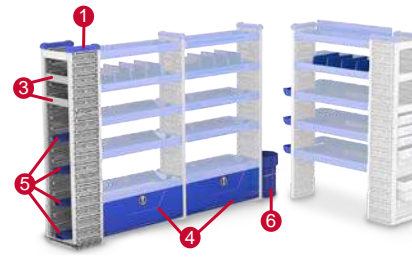
ELECTRICAL OPTIONS			
Item#	Part#	Description	Qty.
1	0SS107KP	Small Drawer w/ Dividers 12"W x 3"H x 12"D	3
2	0SS114KP	Locking Storage Door	2
3	0SS117KP	Steel Wire Spool Rack	1
4	0SS118KP	Storage Bucket & Holder	1



ELECTRICAL OPTIONS			
Item#	Part#	Description	Qty.
1	0SS114KP	Locking Storage Door	2
2	0SS117KP	Steel Wire Spool Rack	1
3	0SS118KP	Storage Bucket & Holder	1



PLUMBING / HVAC OPTIONS			
Item#	Part#	Description	Qty.
1	0SS104KP	Cubby Module 44" H x 14"W x 12"D	1
2	0SS107KP	Small Drawer w/ Dividers 12"W x 3"H x 12"D	3
3	0SS051LKP	Rotation Brackets - Streetside (not visible)	3
4	0SS114KP	Locking Storage Door	2
5	0SS115KP	Steel 30# Freon Tank Kit	3
6	0SS118KP	Storage Bucket & Holder	1



PLUMBING / HVAC OPTIONS			
Item#	Part#	Description	Qty.
1	0SS105KP	Cubby Module 66" H x 14"W x 12"D	1
2	0SS051LKP	Rotation Brackets - Streetside (not visible)	5
3	0SS113KP	Shelf Kit 12"W x 12"D	2
4	0SS114KP	Locking Storage Door	2
5	0SS115KP	Steel 30# Freon Tank Kit	4
6	0SS118KP	Storage Bucket & Holder	1

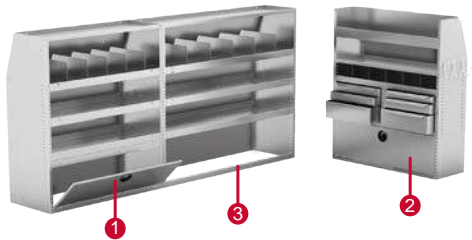
STEEL RACKS & BINS

Masterack's heavy duty steel interiors, used by the nation's largest fleets, offer maximum durability for the toughest applications. Choose from pre-designed trade upgrades or accessorize with Masterack's full line of steel cabinets, drawers, dividers, and bins to maximize the efficiency of your vehicle. **Partition sold separately.**



Low Roof (130" / 148"WB)

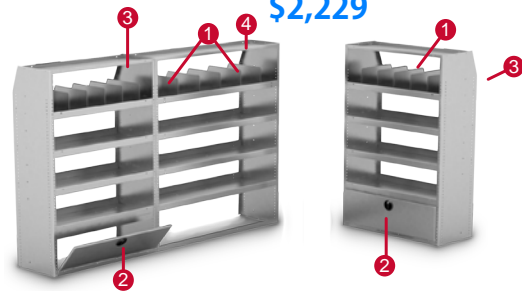
\$1,789



STEEL STANDARD PACKAGE PACKAGE #02G490KP			
Item#	Part#	Description	Qty.
1	02D637KP	37" Racks & Bins Utility Shelf Module 46"H x 37"W x 16"D	1
2	02D638KP	37" Racks & Bins Parts Storage Module 46"H x 37"W x 12"D	1
3	02D657KP	51" Racks & Bins Utility Shelf Module 46"H x 51"W x 16"D	1

Medium Roof (130" / 148"WB) High Roof (148"WB)

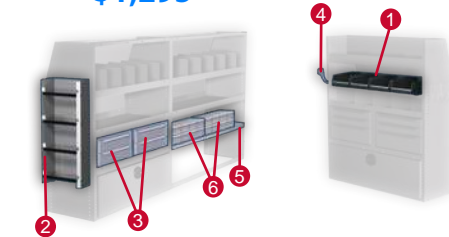
\$2,229



STEEL TALL PACKAGE PACKAGE #02G130KP			
Item#	Part#	Description	Qty.
1	022528KP	Dividers	3
2	027497KP	Storage Door	2
3	02A382KP	Tapered Shelf Module 60"H x 37"W x 16"D	2
4	02A384KP	Tapered Shelf Module 60"H x 51"W x 16"D	1

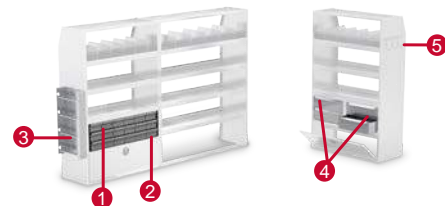
+ TRADE OPTIONS

\$1,295



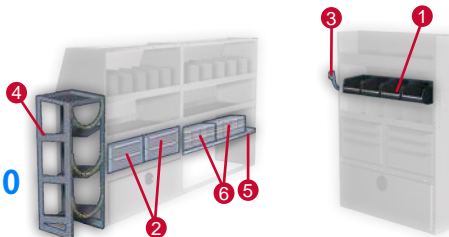
ELECTRICAL OPTIONS			
Item#	Part#	Description	Qty.
1	021471KP	Composite Storage Bins (set of four)	1
2	024304KP	Wire Spool Rack	1
3	025070KP	2-Drawer Cabinet	2
4	025527KP	Triple Utility Hook	1
5	029811KP	51" Tilt Shelf	1
6	021058KP	8-Drawer Cabinet	2

\$1,120



ELECTRICAL OPTIONS			
Item#	Part#	Description	Qty.
1	021007KP	18-Drawer Cabinet	1
2	022531KP	Tilt Shelf 37"W x 16"D	1
3	024304KP	Wire Spool Rack	1
4	025070KP	2-Drawer Cabinet	2
5	025527KP	Triple Utility Hook	1

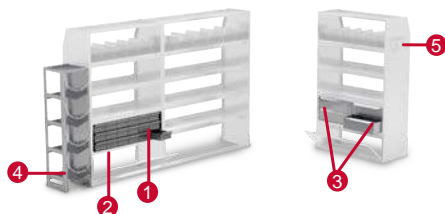
\$1,330



PLUMBING / HVAC OPTIONS			
Item#	Part#	Description	Qty.
1	021471KP	Composite Storage Bins (set of four)	1
2	025070KP	2-Drawer Cabinet	2
3	025527KP	Triple Utility Hook	1
4	025545KP	Triple 30# Freon Tank Holder	1
5	029811KP	51" Tilt Shelf	1
6	021058KP	8-Drawer Cabinet	2

\$1,430

\$1,320



PLUMBING / HVAC OPTIONS			
Item#	Part#	Description	Qty.
1	021007KP	18-Drawer Cabinet	1
2	022531KP	Tilt Shelf 37"W x 16"D	1
3	025070KP	2-Drawer Cabinet	2
4	025254KP	Freon Tank Rack 4-30#	1
5	025527KP	Triple Utility Hook	1

FOLDING ALUMINUM SHELVING

Aluminum folding shelves are there when you need them, and can be folded out of the way when you don't. Manufactured with aluminum materials, this system can also increase your fuel efficiency due to its reduced weight over comparable steel interiors. **Partition sold separately.**

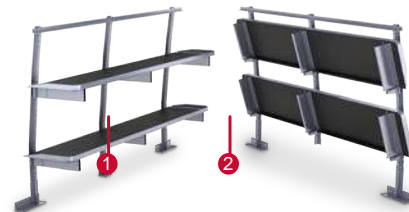


Medium Roof (130"WB)



ALUMINUM FOLDING STANDARD SHELVING PACKAGE			
PACKAGE #02G136KP			
Item#	Part#	Description	Qty.
1	02H279KP	Aluminum Shelving Street Side 94"W x 20"D	1
2	02H280KP	Aluminum Shelving Curb Side 50"W x 20"D	1

Medium Roof / High Roof (148"WB)



ALUMINUM FOLDING LONG SHELVING PACKAGE			
PACKAGE #02G137KP			
Item#	Part#	Description	Qty.
1	02H281KP	Aluminum Shelving Street Side 94"W x 20"D	1
2	02H282KP	Aluminum Shelving Curb Side 75"W x 20"D	1

CARGO MANAGEMENT

Coroplast wall panels protect your van and cargo. Use the aluminum 'L' Track cargo management system and tie downs to secure large cargo in place. **Partition sold separately.**

Low Roof

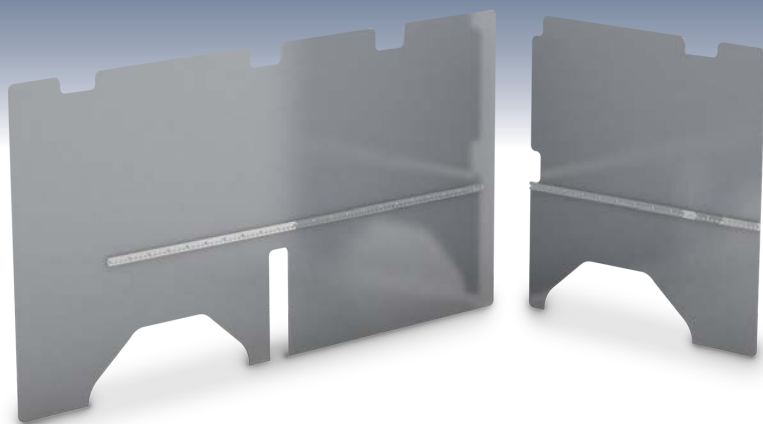
02G146KP 130"WB
02G147KP 148"WB

Medium Roof

02G132KP 130"WB
02G133KP 148"WB

High Roof

02G133KP 148"WB
0TFH07KP 148"EXT.WB



LADDER RACKS ERGORACKS®

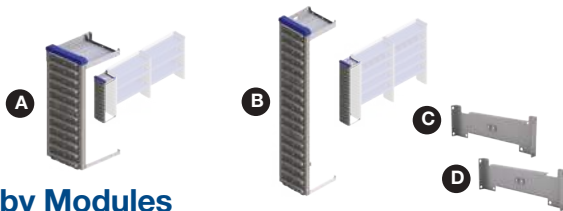
Allows for easy loading and unloading of ladders with hydraulic cylinder that reduces muscle strain. One pull of the handle moves the ladder from its secured position to the side of the vehicle, where it can then be easily lifted off the hooks and carried away. Improves gas mileage by being lighter than similar steel ladder rack solutions. Reduce install time and improve resale with no holes to drill.



ERGORACK® SINGLE RACKS		
Part#	Wheelbase	Roof Height
02G150KP	130"	Low
02G744KP	130"	Medium
02G741KP	148"	Low
02G689KP	148"	Medium
02G148KP	148"	High

ERGORACK® DOUBLE RACKS		
Part#	Wheelbase	Roof Height
02G484KP	130"	Low
02G745KP	130"	Medium
02G742KP	148"	Low
02G690KP	148"	Medium
02G149KP	148"	High

SmartSpace Components



Cubby Modules

Add a cubby module to any base package to create more room for smaller items. Cubby modules can be installed at 90 or 180 degrees for rear or side door access. Add drawers, 12" shelves, and trade accessories to customize your cubby. Note: Rotation brackets needed to rotate module 90 degrees (one per shelf).

- A** / Cubby Module 44"H x 12"W x 12"DPart # OSS104KP
B / Cubby Module 66"H x 12"W x 12"DPart # OSS105KP
C / Rotation Bracket - StreetsidePart # OSS051LKP
D / Rotation Bracket - CurbsidePart # OSS051RKP



Dividers

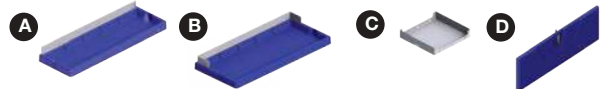
Drop-in dividers are lightweight composite and minimize rattling of tools and cargo.

- A** / Dividers 12"D – Set of 4Part # OSS109KP
B / Dividers 16"D – Set of 4Part # OSS110KP

Drawers & Bins

Add drawers to any 12"W cubby module. Bins can be added to the side of any upright. Drawers and bins require no tools to install or reconfigure!

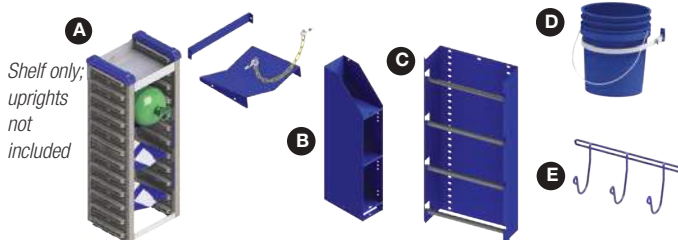
- A** / Large Drawer w/ DividersPart # OSS106KP
B / Small Drawer w/ DividersPart # OSS107KP
C / Parts Bin w/ DividersPart # OSS108KP



Shelving

Customize your shelving modules with additional components. Components require no tools to install or reconfigure!

- A** / Shelf Kit w/ Shelf Back 37"W x 12"DPart # OSS111KP
B / Shelf Kit w/ Shelf Back 37"W x 16"DPart # OSS112KP
C / Aluminum Shelf Kit 12"W x 12"DPart # OSS113KP
D / Locking Storage Door 37"W x 12"HPart # OSS114KP



Trade Accessories

Looking for accessories to fit your trade? SmartSpace is the answer!

- A** / 30# Freon Tank Kit (One shelf per kit)Part # OSS115KP
B / Manual RackPart # OSS116KP
C / Wire Spool RackPart # OSS117KP
D / Storage Bucket & HolderPart # OSS118KP
E / Triple Utility HookPart # OSS119KP

Distributed By:

For more information or to find an authorized Masterack® installer in your area, visit www.masterack.com.



Masterack and SmartSpace are registered trademarks. ErgoRack is a registered trademark of ROM Corporation. Products and specifications subject to change without notice.

©2016 Masterack

Cat# 0P23-0041-5 04/2016

