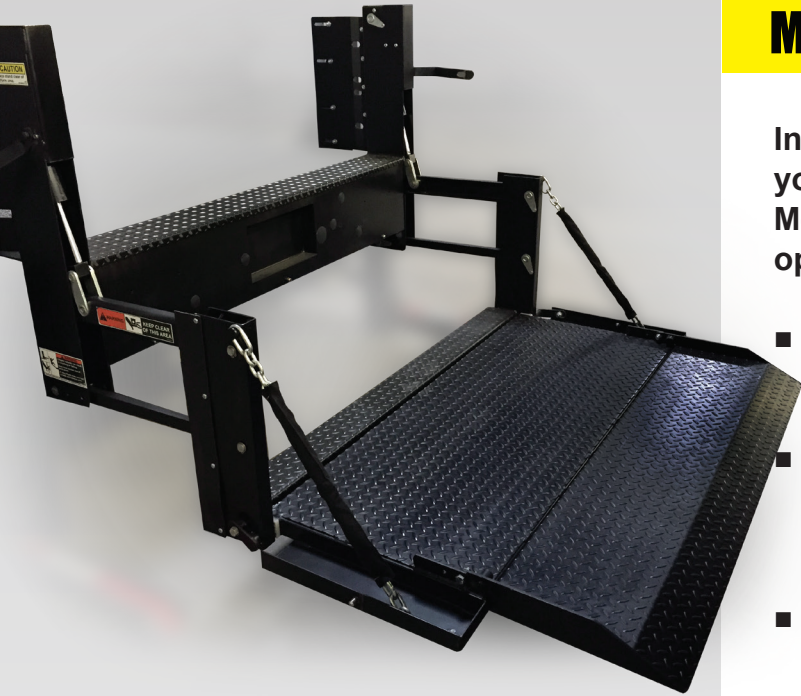


# Me2 SERIES

## Pickup



## Me2 SPECIFICATIONS

Introducing the all-new Me2 just like the liftgates you know, but at significantly reduced cost. The Me2 provides direct lifting with level ride and ramp options that increase loadable platform depth.

- Me2 liftgates are built with high performance and low maintenance in mind
- Oversized, fully enclosed pump and motor assembly helps ensure increased life and less downtime
- Maintenance-free bearings reduce the need for service



	Model No.	Load Area	Ramp	Travel	Weight
1300 Lbs	<b>Steel Platform</b>				
	C2-60-1342 TP27	55" X 27"	4"	28" to 42"	460 lbs
	C2-60-1342 TP38	55" X 38"	4"		510 lbs
	C2-60-1342 TP42	55" X 42"	7"		535 lbs
	<b>Aluminum Platform</b>				
	C2-60-1342 EA27	55" X 27"	4"	28" to 42"	435 lbs
	C2-60-1342 EA38	55" X 38"	6"		465 lbs
	C2-60-1342 EA48	55" X 48"	6"		495 lbs
	<b>Grip Strut Platform</b>				
	C2-60-1342 GS27	55" X 27"	4"	28" to 42"	460 lbs
<b>Bar Grate Platform</b>					
C2-60-1342 BG27	55" X 27"	4"	28" to 42"	460 lbs	
1500 Lbs	<b>Steel Platform</b>				
	C2-60-1542 TP27	55" X 27"	4"	28" to 42"	460 lbs
	C2-60-1542 TP38	55" X 38"	4"		510 lbs
	C2-60-1542 TP42	55" X 42"	7"		535 lbs
	<b>Aluminum Platform</b>				
	C2-60-1542 EA27	55" X 27"	4"	28" to 42"	435lbs
	C2-60-1542 EA38	55" X 38"	6"		465 lbs
	C2-60-1542 EA48	55" X 48"	6"		495 lbs
	<b>Grip Strut Platform</b>				
	C2-60-1542 GS27	55" X 27"	4"	28" to 42"	460 lbs
<b>Bar Grate Platform</b>					
C2-60-1542 BG27	55" X 27"	4"	28" to 42"	460 lbs	



# Me2 SERIES Pickup

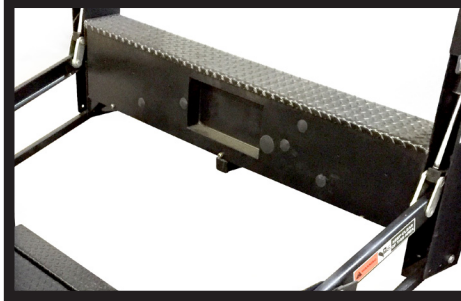
# MAXON®

## Me2 standard features

- Dual hydraulic lifting cylinders
- Maintenance-free components
- Protected / recessed main control with time-out feature
- Steel or aluminum platforms
- Fully-enclosed hydraulic system

## Optional features

- Light Kits
- Remote Pendant Control
- Rubber Platform Protection Bumpers
- Tire Rack Kit



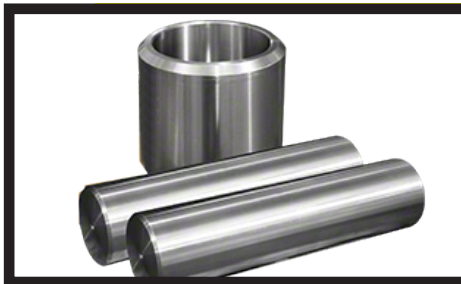
## Enclosed Pump & Motor Assembly

The Me2 pump and motor assembly is fully enclosed and shielded from the elements.



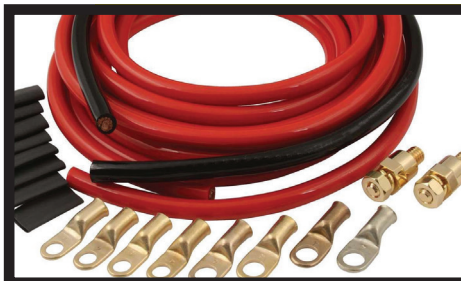
## Main Control with Time-Out Feature

A timed toggle control prevents unauthorized use. It automatically deactivates 90 seconds after operation.



## Maintenance Free Pins & Bushings

Maintenance free pins and bushings allow for years of maintenance free service.



## Power Cable with Full Length Ground

The dedicated ground cable helps to get the maximum lifespan out of the vehicles battery.

Distributed by:

M-211-0716



Maxon Lift Corp. 11921 Slauson Ave., Santa Fe Springs, CA 90670  
800.227.4116 Fax 888.771.7713, [www.maxonlift.com](http://www.maxonlift.com)